

Product Overview 2024

Special Cylinders

Special cylinders upon request:

- Maximum piston diameter: 500mm
- Maximum working pressure: 700 bar (70Mpa)
- double acting hydraulic cylinder
- double rod cylinder
- single acting hydraulic cylinder
- plunger cylinder
- double acting telescopic cylinder
- single acting telescopic cylinder
- pneumatic cylinder
- all cylinders are available as stainless steel or special painting

Type:

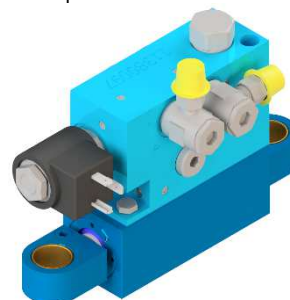
- according to ATEX
- position transducer
- valve technic
- pipe-break protection
- anti-twist protection
- casing
- reed contact
- giver/taker method
- contact switch
- inductive sensors
- special fits
- more layouts upon request



Cylinder with external position transducer



Cylinder with internal position transducer



Control valve cylinder with 4/2 directional valve and counterbalance overcenter valves



Cylinder with counterbalance valve



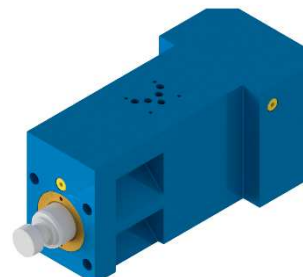
Cylinder with current regulation valves



Cylinder with reed switches



Giver/taker method - made of steel (QPQ)/INOX

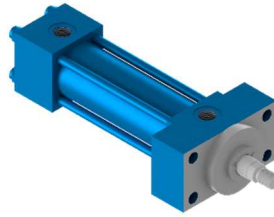


Block cylinder with holes according to ISO 4401.05-05-0-94

ISO 6020/2 - R3

Tie rod cylinder according to ISO 6020/2

- max. working pressure: 160 bar (16 Mpa)
- piston diameter: 25mm to 200mm

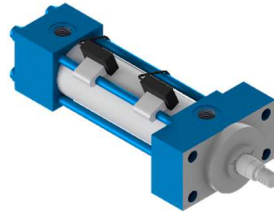


[ONLINE CONFIGURABLE](#)

ISO 6020/2 - M3

Tie rod cylinder according to ISO 6020/2

- with adjustable magnetic sensors
- max. working pressure: 120 bar (12 Mpa)
- piston diameter: 25mm to 100mm



[ONLINE CONFIGURABLE](#)

ISO 6020/2 - T3

Tie rod cylinder according to ISO 6020/2

- with integrated position transducer
- max. working pressure: 160 bar (16 Mpa)
- piston diameter: 40mm to 200mm



[ONLINE CONFIGURABLE](#)

ISO 6022 - R2

Bolted cylinder ISO 6022

- max. working pressure: 250 bar (25 Mpa)
- piston diameter: 50mm to 320mm



[ONLINE CONFIGURABLE](#)

DWLC

Welded cylinder
- Quick delivery program -

- max. working pressure: 160 bar (16 Mpa)
- piston diameter: 25mm to 100mm

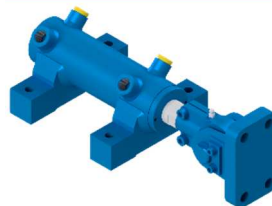


[ONLINE CONFIGURABLE](#)

DWM

Welded cylinder

- max. working pressure: 210-250 bar (21-25 Mpa)
- piston diameter: 25mm to 250mm



[ONLINE CONFIGURABLE](#)

DWLX - INOX

Welded cylinder

- made of stainless steel
- max. working pressure: 150 bar (15 Mpa)
- piston diameter: 40mm to 100mm



[ONLINE CONFIGURABLE](#)

DWMI

Welded cylinder

- with integrated position transducer
- max. working pressure: 250 bar (25 Mpa)
- piston diameter: 40mm to 250mm

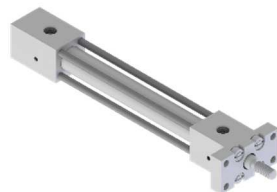


ONLINE CONFIGURABLE

Micro-Z - INOX

Tie rod cylinder – Mini

- made of stainless steel
- max. working pressure: 200 bar (20 Mpa)
- piston diameter: 8mm to 25mm

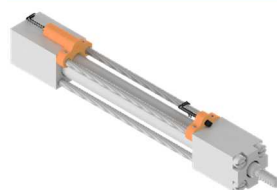


ONLINE CONFIGURABLE

Micro-Z mit Reedschalter - INOX

Tie rod cylinder – Mini

- made of stainless steel
- with adjustable reed switch (end switch)
- max. working pressure: 200 bar (20 Mpa)
- piston diameter: 8mm to 25mm



ONLINE CONFIGURABLE

PL

Plunger cylinder

- max. working pressure: 160 bar (16 Mpa)
- rod diameter: 20mm to 100mm



ONLINE CONFIGURABLE

DTC

Double acting telescopic cylinder

- max. working pressure: 175 bar (17,5 Mpa)
- maximum number of stages: 6



ONLINE CONFIGURABLE

DTZD

Double acting telescopic cylinder

- max. working pressure: 120 bar (12 Mpa)
- maximum number of stages: 4



ONLINE CONFIGURABLE

DTZ

Double acting telescopic cylinder

- max. working pressure: 180 bar (18 Mpa)
- maximum number of stages: 3



NEW

SOON WILL ALSO BE CONFIGURABLE ONLINE

ETZ

Single acting telescopic cylinder

- max. working pressure: 220 bar (22 Mpa)
- maximum number of stages: 10



ONLINE KONFIGURIERBAR

Block Cylinder

Compact hydraulic cylinder

- adjustable magnetic sensors
- maximum working pressure: 160 bar (16 Mpa)
- maximum pressure: 250 bar (25 Mpa)
- piston diameter: 25mm to 100mm



Accessory

- ball-joint ends
- spherical plain bearings
- clevis brackets
- forks
- pivot pins
- pivot pin fixing
- trunnion brackets

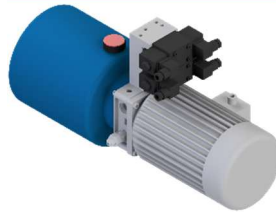


ONLINE KONFIGURIERBAR

Hydraulic Units

Direct and alternating current units

- tank size: maximum 2.000 Liter
- maximum working pressure: 400 bar (40 Mpa)
- also available as special production



Hand and Foot Pumps

Hand pumps:

- single-acting
- double-acting
- combined type
- from steel and stainless steel

Foot pumps:

- single acting



ONLINE KONFIGURIERBAR

AGIROSSI

At AGIROSSI, enthusiastic technicians with a high standard of quality and perfection permanently work on further developments and innovations of hydraulic components such as hydraulic cylinders, micro cylinders, stainless steel cylinders, special pneumatic cylinders and hydraulic units. Their success proves them right.

For more than 30 years, we have convinced nearly 800 clients of the quality of our hydraulic power units, hydraulic cylinders, stainless steel, hydraulic valves etc.

Große Heide 13
D-55444 Waldlaubersheim

Tel.: +49-6707-9157515
Fax: +49-6707-9157525

E-Mail: info@agirossi.de
www.agirossi.de