

Product Overview 2023

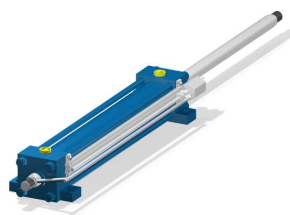
Special Cylinders

Special cylinders upon request:

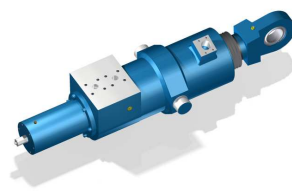
- Maximum piston diameter: 500mm
- Maximum working pressure: 400 bar (40Mpa)
- double acting hydraulic cylinder
- double rod cylinder
- single acting hydraulic cylinder
- plunger cylinder
- double acting telescopic cylinder
- single acting telescopic cylinder
- pneumatic cylinder
- all cylinders are available as stainless steel or special painting

Type:

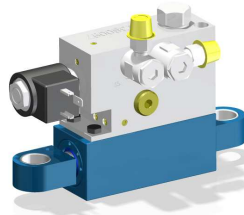
- according to ATEX
- position transducer
- valve technic
- pipe-break protection
- anti-twist protection
- casing
- reed contact
- master/slave method
- contact switch
- inductive sensors
- special fits
- more layouts upon request



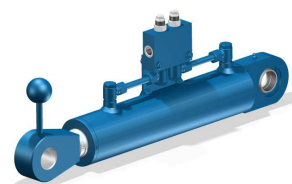
Cylinder with external position transducer



Cylinder with internal position transducer



Control valve cylinder with 4/2 directional valve and counterbalance overcenter valves



Cylinder with counterbalance valve



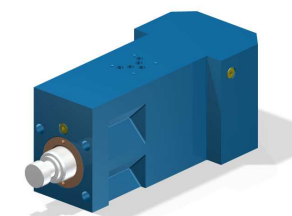
Cylinder with current regulation valves



Cylinder with reed switches



Master/Slave method - made of steel (QPQ)/INOX

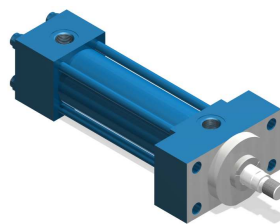


Block cylinder with holes according to ISO 4401.05-05-0-94

ISO 6020/2 - R3

Tie rod cylinder according to ISO 6020/2

- maximum working pressure: 160 bar (16 Mpa)
- test pressure: 240 bar (24 Mpa)
- piston diameter: 25mm to 200mm

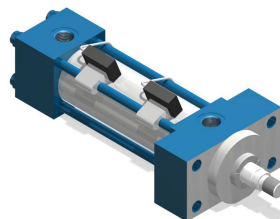


ONLINE CONFIGURABLE

ISO 6020/2 - M3

Tie rod cylinder according to ISO 6020/2

- with adjustable magnetic sensors
- maximum working pressure: 120 bar (12 Mpa)
- test pressure: 160 bar (16 Mpa)
- piston diameter: 25mm to 100mm

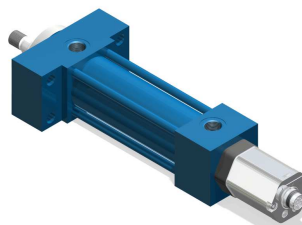


ONLINE CONFIGURABLE

ISO 6020/2 - T3

Tie rod cylinder according to ISO 6020/2

- with integrated position transducer
- maximum working pressure: 160 bar (16 Mpa)
- test pressure: 240 bar (24 Mpa)
- piston diameter: 40mm to 200mm

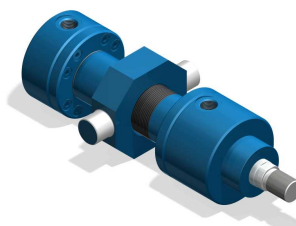


ONLINE CONFIGURABLE

ISO 6022 - R2

Bolted cylinder ISO 6022

- maximum working pressure: 250 bar (25 Mpa)
- test pressure: 320 bar (32 Mpa)
- piston diameter: 50mm to 320mm



ONLINE CONFIGURABLE

DWLC

Welded cylinder
- Quick delivery program -

- maximum working pressure: 160 bar (16 Mpa)
- test pressure: 210 bar (21 Mpa)
- piston diameter: 25mm to 100mm

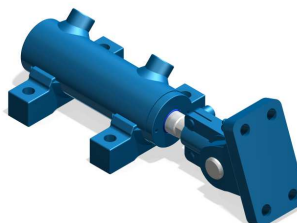


ONLINE CONFIGURABLE

DWM

Welded cylinder

- maximum working pressure: 210-250 bar (21-25 Mpa)
- test pressure: 300 bar (30 Mpa)
- piston diameter: 25mm to 250mm

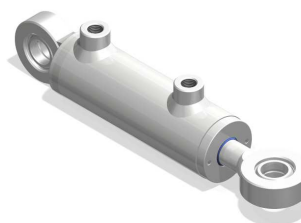


ONLINE CONFIGURABLE

DWLX - INOX

Welded cylinder

- made of stainless steel
- maximum working pressure: 150 bar (15 Mpa)
- piston diameter: 40mm to 100mm



ONLINE CONFIGURABLE

DWMI

Welded cylinder

- with integrated position transducer
- maximum working pressure: 250 bar (25 Mpa)
- test pressure: 320 bar (32 Mpa)
- piston diameter: 40mm to 250mm



ONLINE CONFIGURABLE

Micro-Z - INOX

Tie rod cylinder – Mini

- made of stainless steel
- maximum working pressure: 200 bar (20 Mpa)
- piston diameter: 8mm to 25mm



ONLINE CONFIGURABLE

Micro-Z with reed switch - INOX

Tie rod cylinder – Mini

- made of stainless steel
- with adjustable reed switch (end switch)
- maximum working pressure: 200 bar (20 Mpa)
- piston diameter: 8mm to 25mm



PL

Plunger cylinder

- maximum working pressure: 160 bar (16 Mpa)
- test pressure: 210 bar (21 Mpa)
- rod diameter: 20mm to 100mm



ONLINE CONFIGURABLE

DTC

Double acting telescopic cylinder

- maximum working pressure: 175 bar (17,5 Mpa)
- maximum number of stages: 6
- maximum stroke: 4.590mm

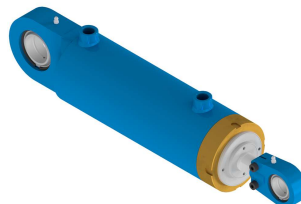


ONLINE CONFIGURABLE

DTZD

Double acting telescopic cylinder

- maximum working pressure: 120 bar (12 Mpa)
- maximum number of stages: 4
- maximum stroke: 3.000mm

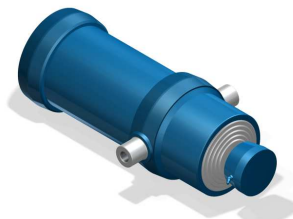


ONLINE CONFIGURABLE

ETZ

Single acting telescopic cylinder

- maximum working pressure: 220 bar (22 Mpa)
- maximum number of stages: 10
- maximum stroke: 6.310mm



ONLINE CONFIGURABLE

Block Cylinder

Compact hydraulic cylinder

- adjustable magnetic sensors
- maximum working pressure: 160 bar (16 Mpa)
- maximum pressure: 250 bar (25 Mpa)
- piston diameter: 25mm to 100mm



Accessory

- ball-joint ends
- spherical plain bearings
- clevis brackets
- forks
- pivot pins
- pivot pin fixing
- trunnion brackets

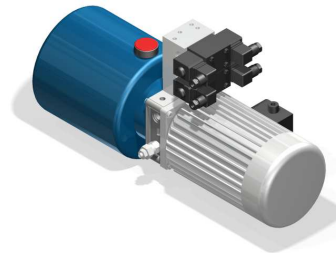


ONLINE CONFIGURABLE

Hydraulic Units

Direct and alternating current units

- tank size: maximum 2.000 Liter
- maximum working pressure: 400 bar (40 Mpa)
- also available as special production



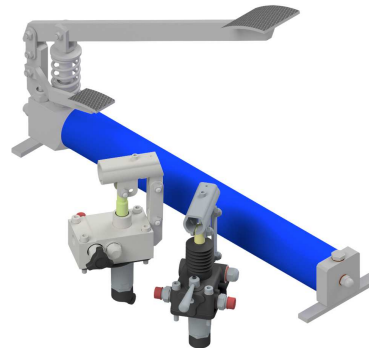
Hand and Foot Pumps

Hand pumps:

- single-acting
- double-acting
- combined type
- from steel and stainless steel

Foot pumps:

- single acting



ONLINE CONFIGURABLE

AGIROSSI

At AGIROSSI, enthusiastic technicians with a high standard of quality and perfection permanently work on further developments and innovations of hydraulic components such as hydraulic cylinders, micro cylinders, stainless steel cylinders, special pneumatic cylinders and hydraulic units. Their success proves them right.

For more than 25 years, we have convinced nearly 800 clients of the quality of our hydraulic power units, hydraulic cylinders, stainless steel, hydraulic valves etc.

Große Heide 13
D-55444 Waldlaubersheim

Tel.: +49-6707-9157515
Fax: +49-6707-9157525

E-Mail: info@agirossi.de
www.agirossi.de